

Sending Timecode from Reaper to Titan on the same PC

This is an example of how to use Reaper - a much more powerful DAW (digital audio workstation) than Winamp - to send timecode to Titan, assuming both are installed on the same PC.

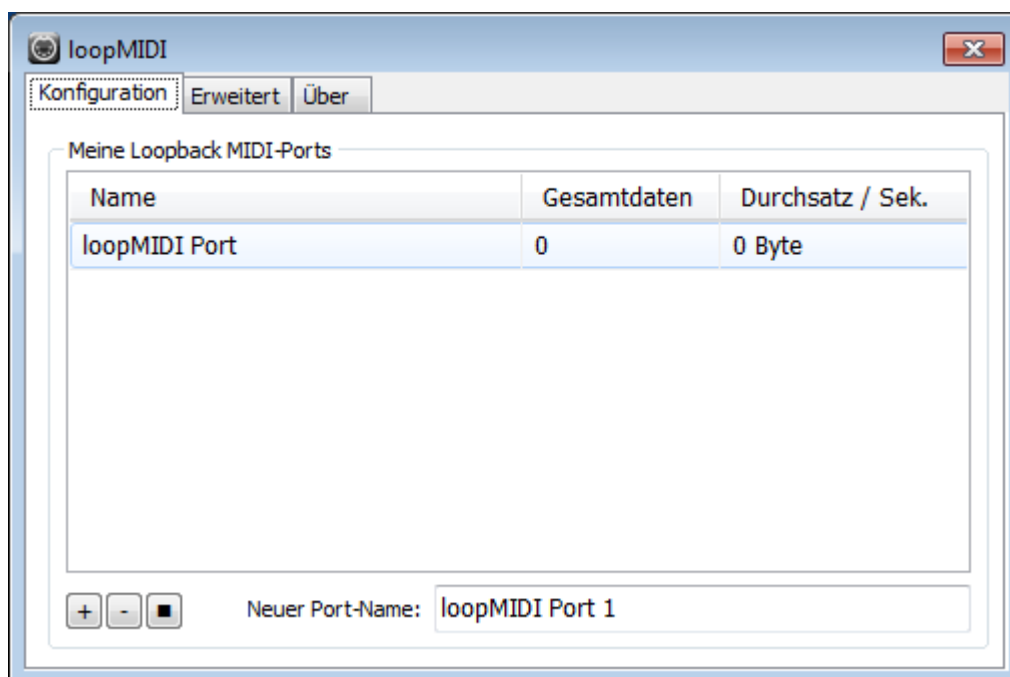
Prerequisites

1. Titan PC-Suite, from v12 on (AvoKey required)
2. loopMIDI (see [Software List](#), to route the MIDI signal from one program to another)
3. Reaper (see [Software List](#))

Make it run

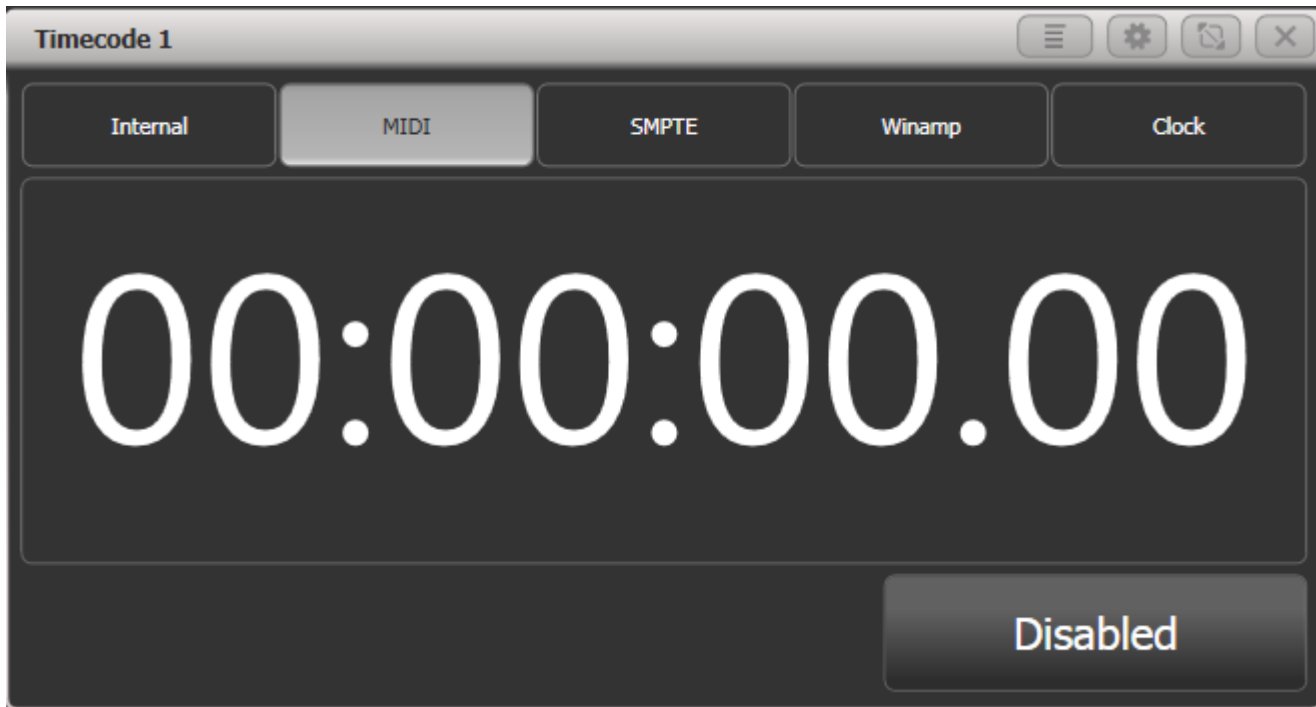
1. loopMIDI

This needs to be started (usually: automatically when Windows starts). By default it provides a virtual MIDI port named loopMIDI Port:



2. Titan PC Suite

In order to initially watch the timecode open a timecode workspace window (e.g. Timecode 1) and select MIDI as timecode source.

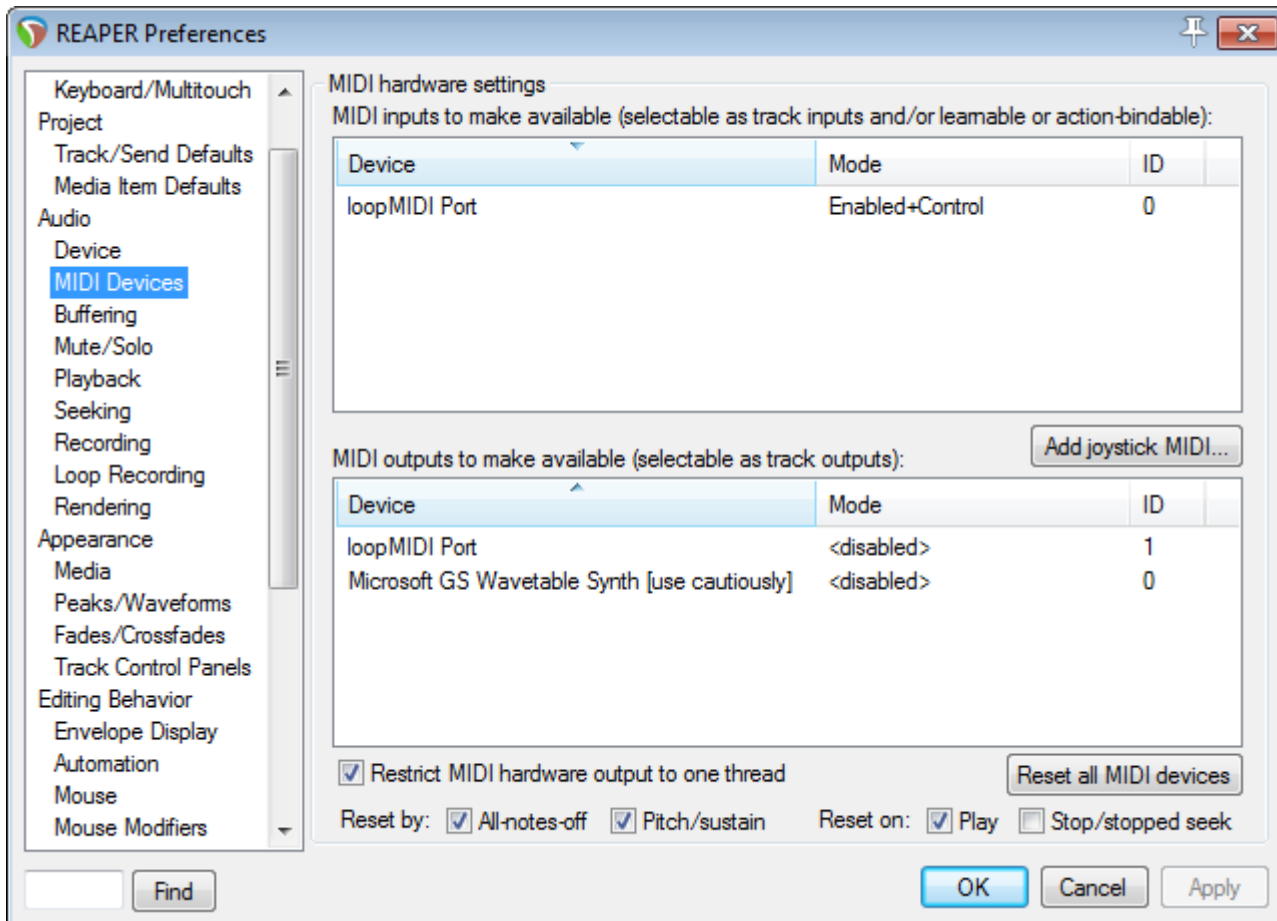


3. Reaper

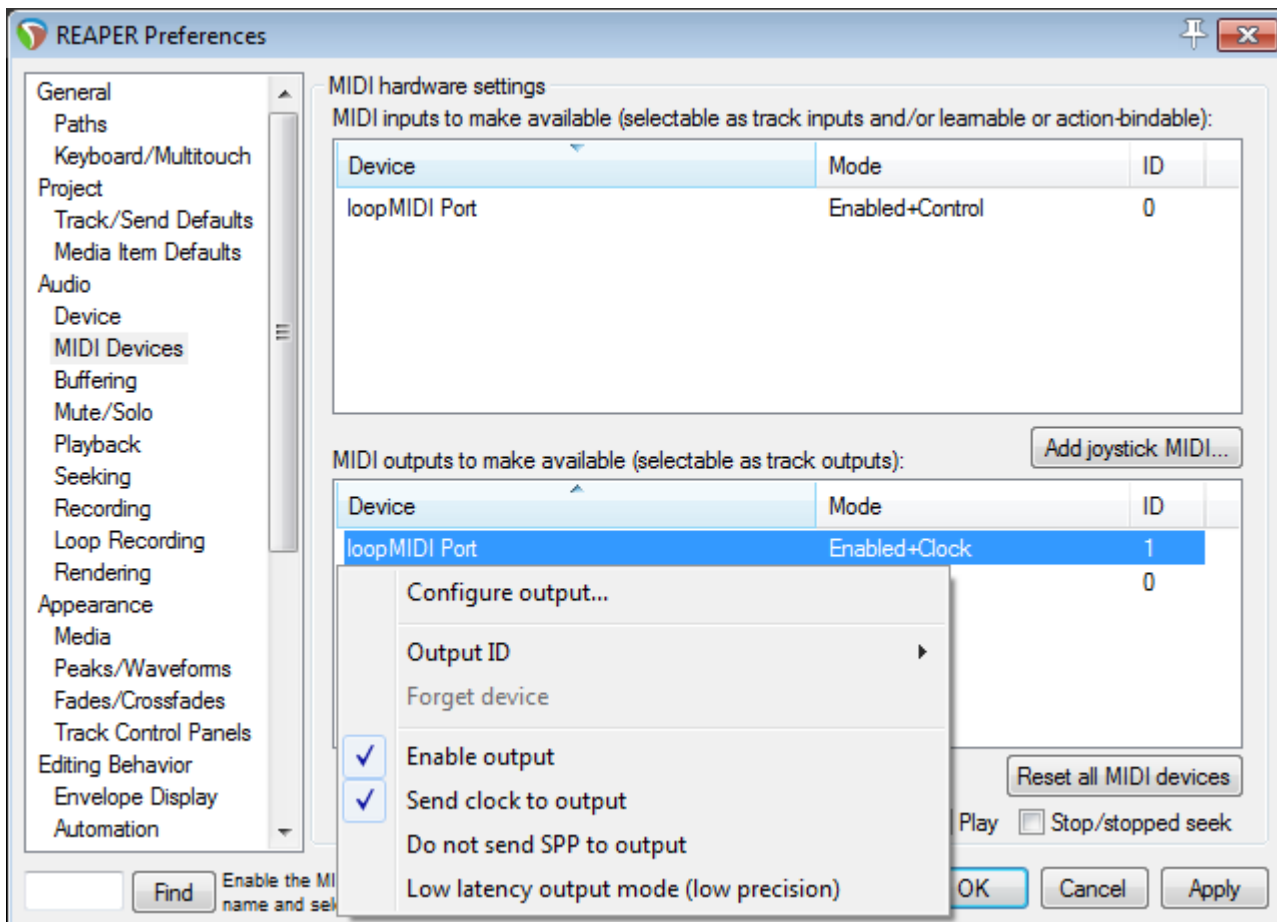
Launch Reaper. Load a track if you want (not required for this to function). However here are the steps to configure Reaper correctly:

3.1 Enable MIDI Output

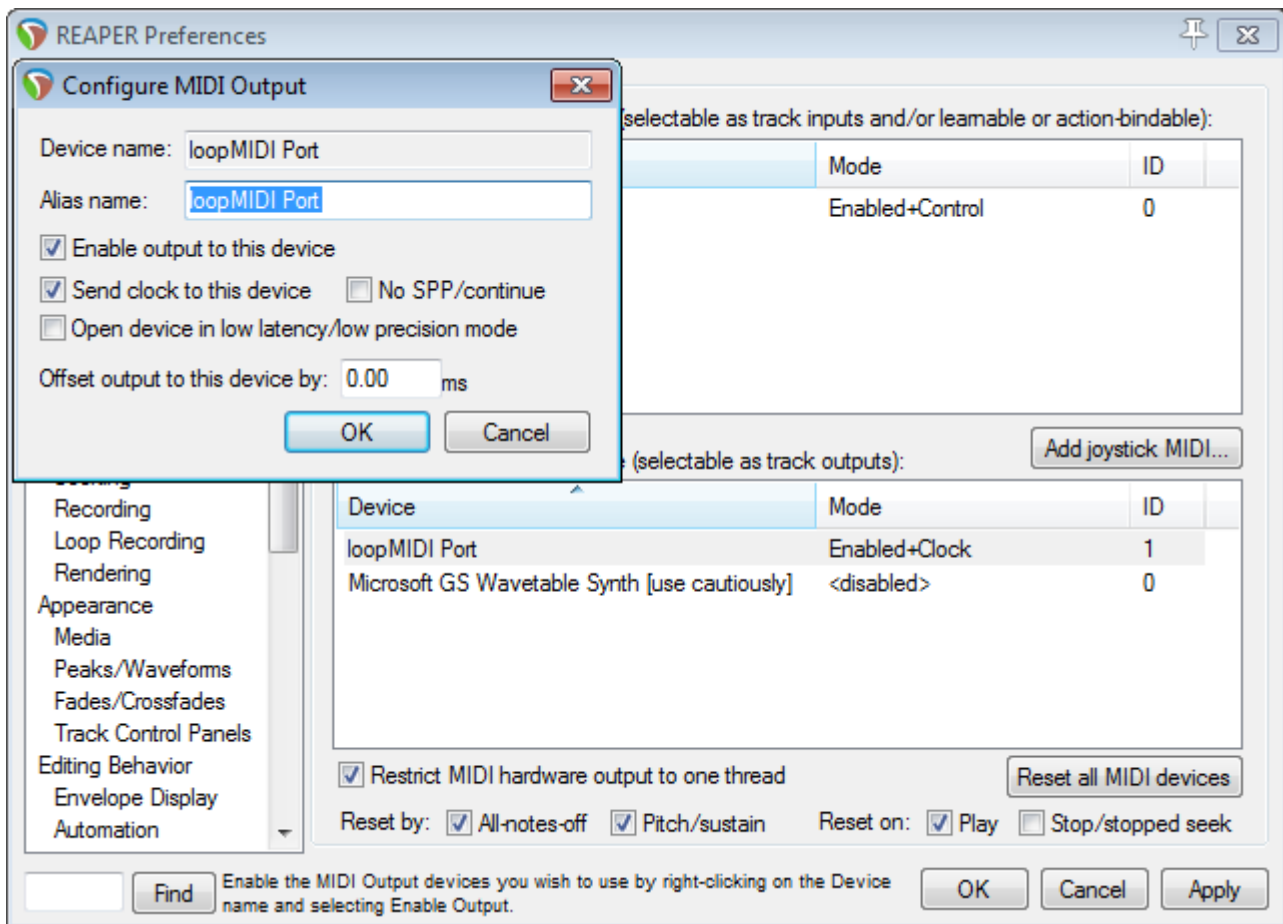
In the Options menu select Preferences - this opens the preferences window. Find MIDI devices in the Audio section. This should list loopMIDI Port as MIDI output:



Right-click on loopMIDI Port output and either enable output and Send clock... from the menu...



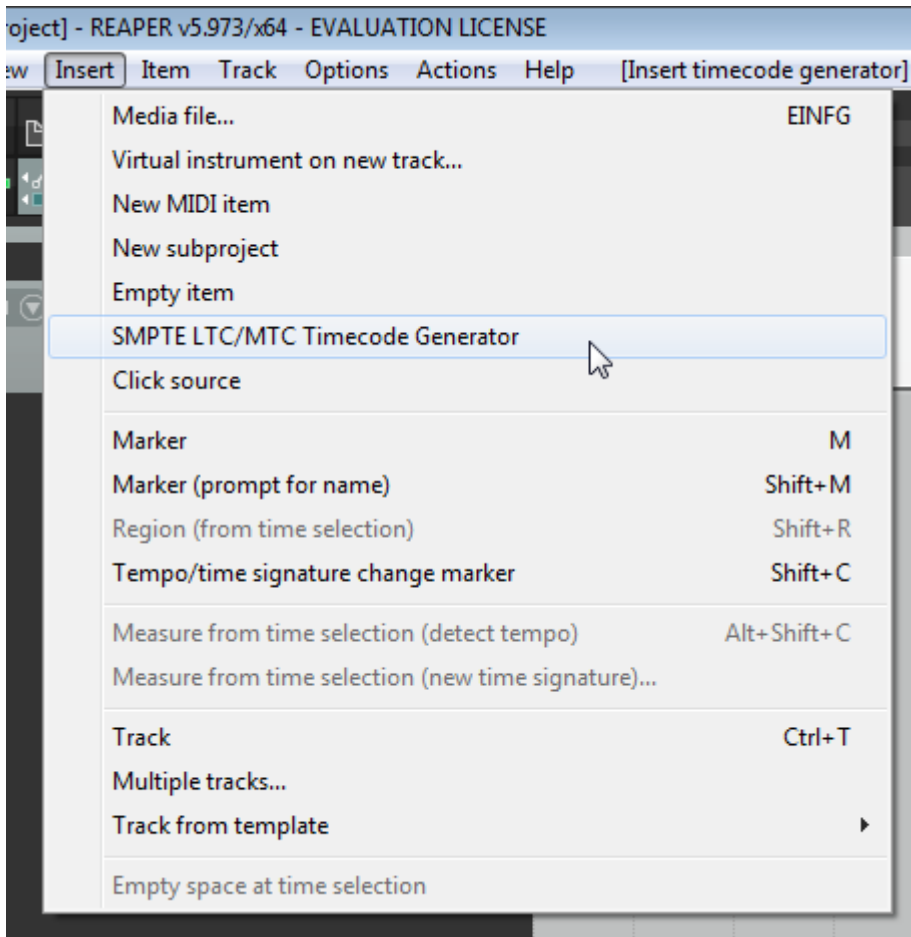
... or select **Configure output...** and make the settings there:



Confirm the settings with OK to close the preferences window.

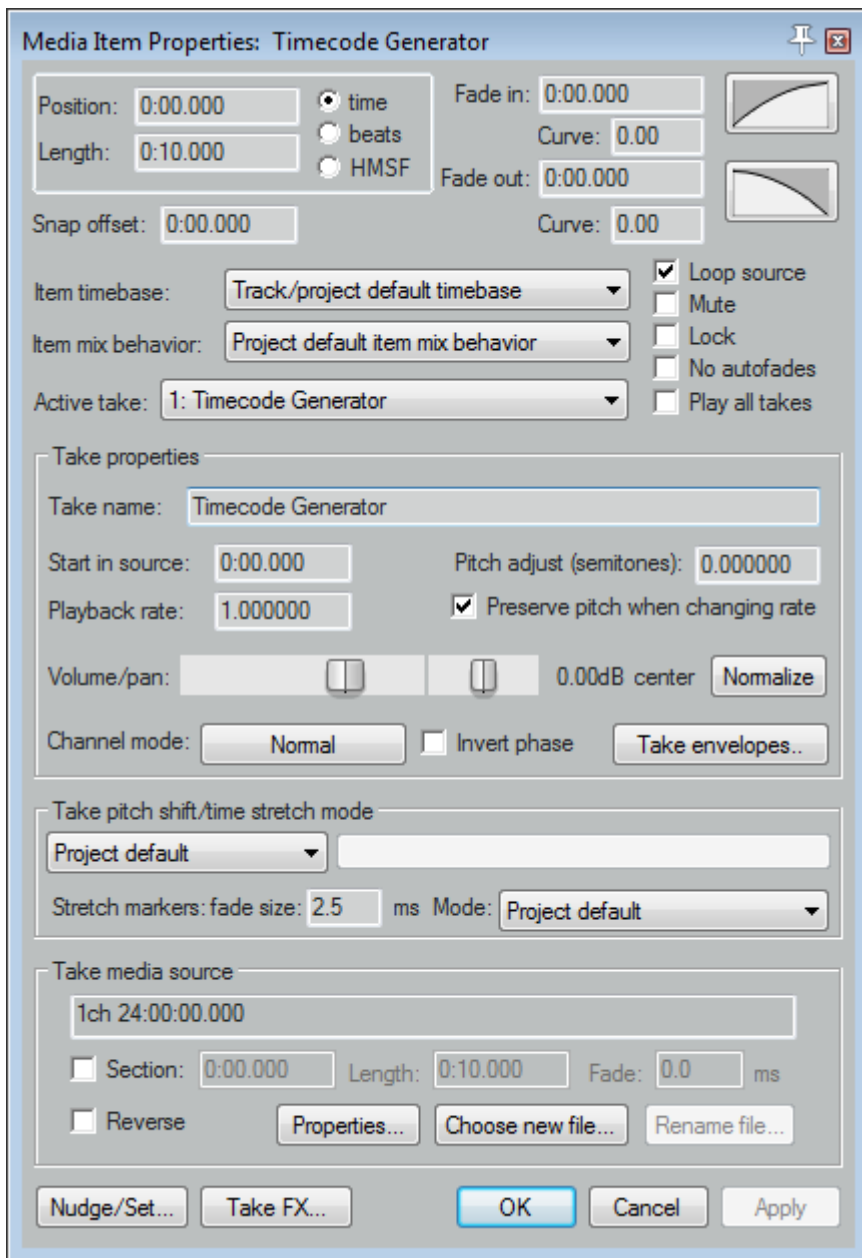
3.2 Insert Timecode Generator

Rewind the timeline to 0:00:00 (simply press <Pos 1>). From the Insert menu select SMPTE LTC/MTC Timecode Generator. This inserts this generator as new track.

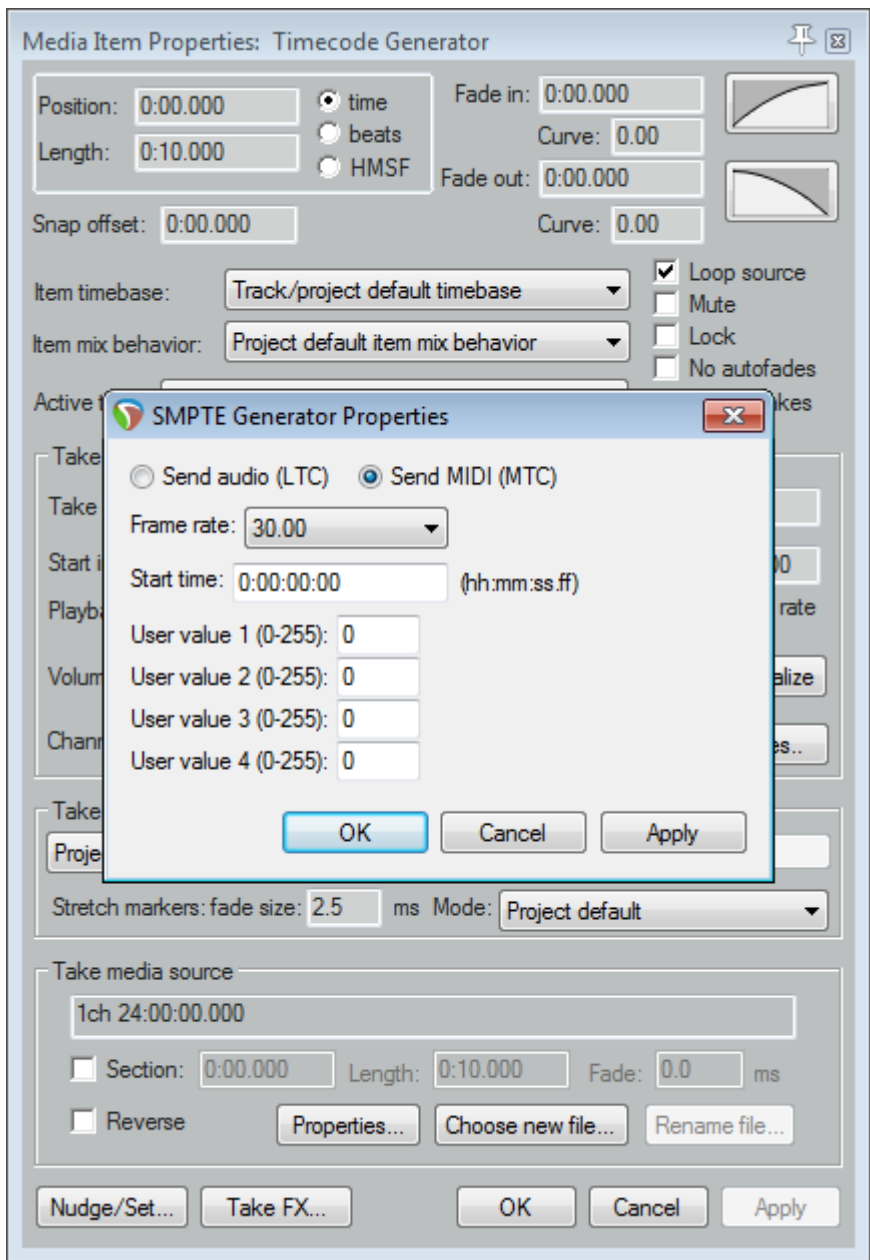


3.3 Adjust Timecode Generator

Right-click on the new timecode track, and from the context menu select Item properties. This opens the Media Item Properties window:



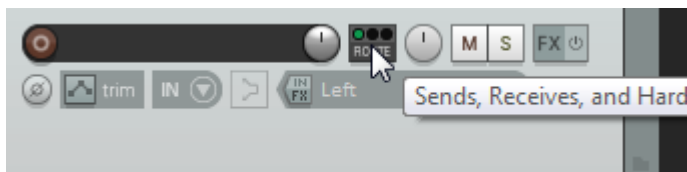
If you want then you can change length, position and other details. In any case you need to make sure it is MTC (MIDI timecode): click on the Properties button (at the bottom). In the new little window set the properties to Send MIDI (MTC):



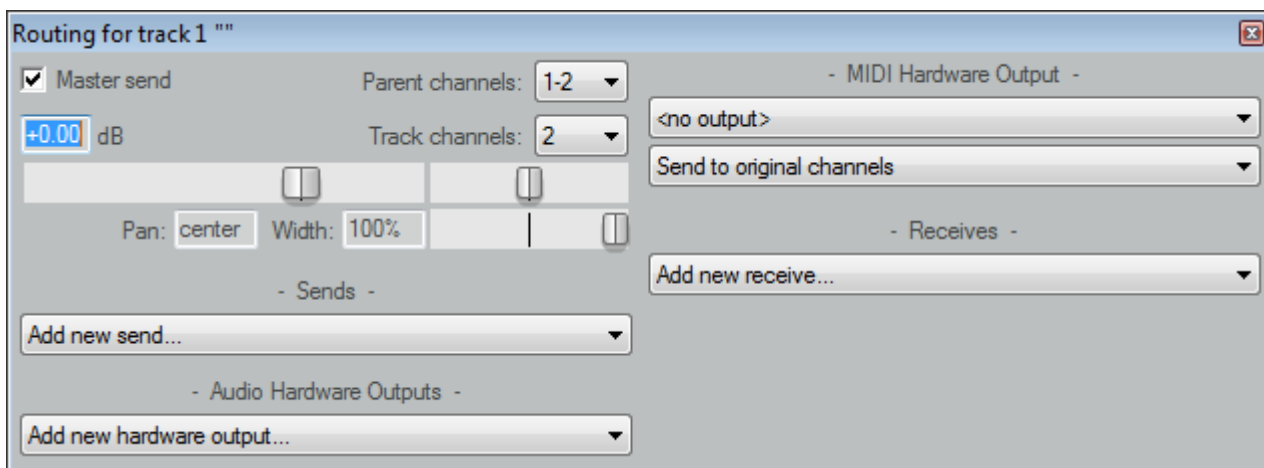
Confirm/close both windows by clicking OK.

3.4 Route the MTC signal

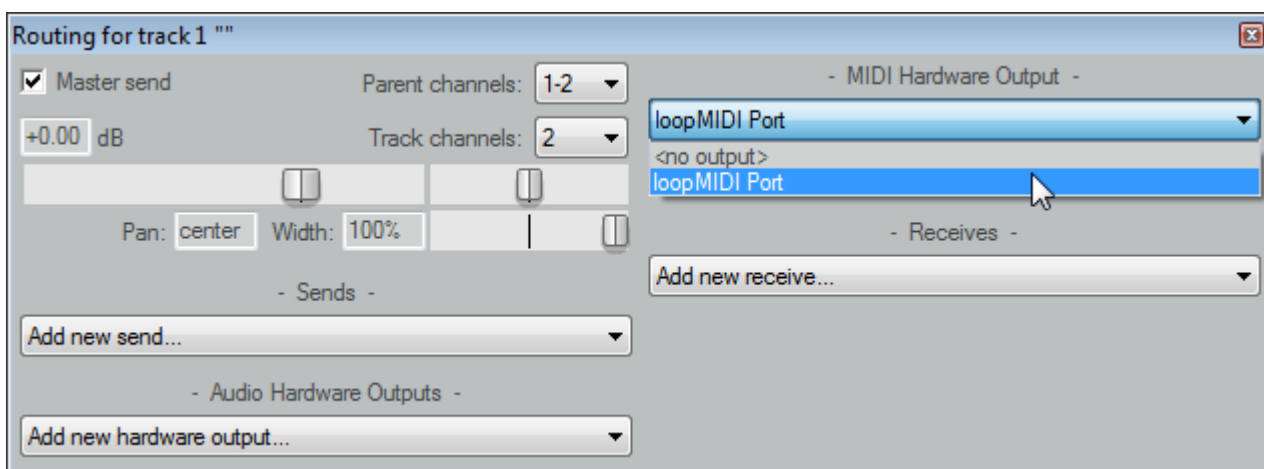
Click on the routing button in the track controls (left to the timecode track):



This opens the routing window for this track:



Under MIDI Hardware Output (top-right) select loop MIDI Port:

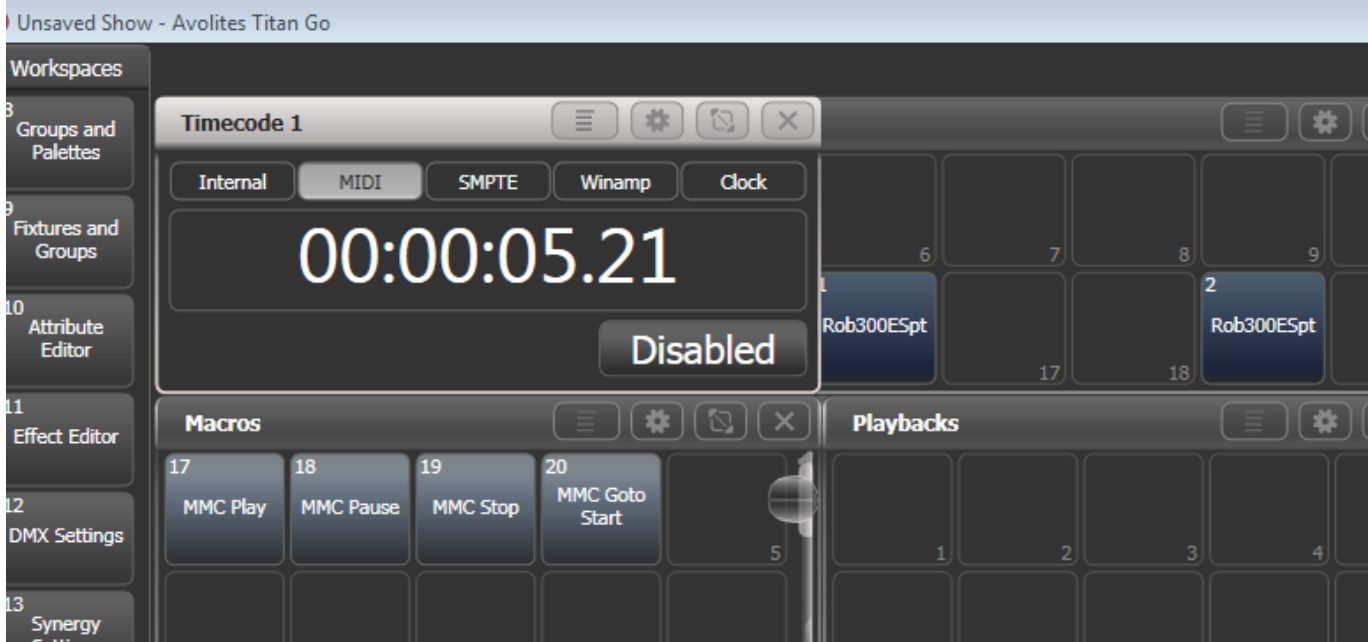
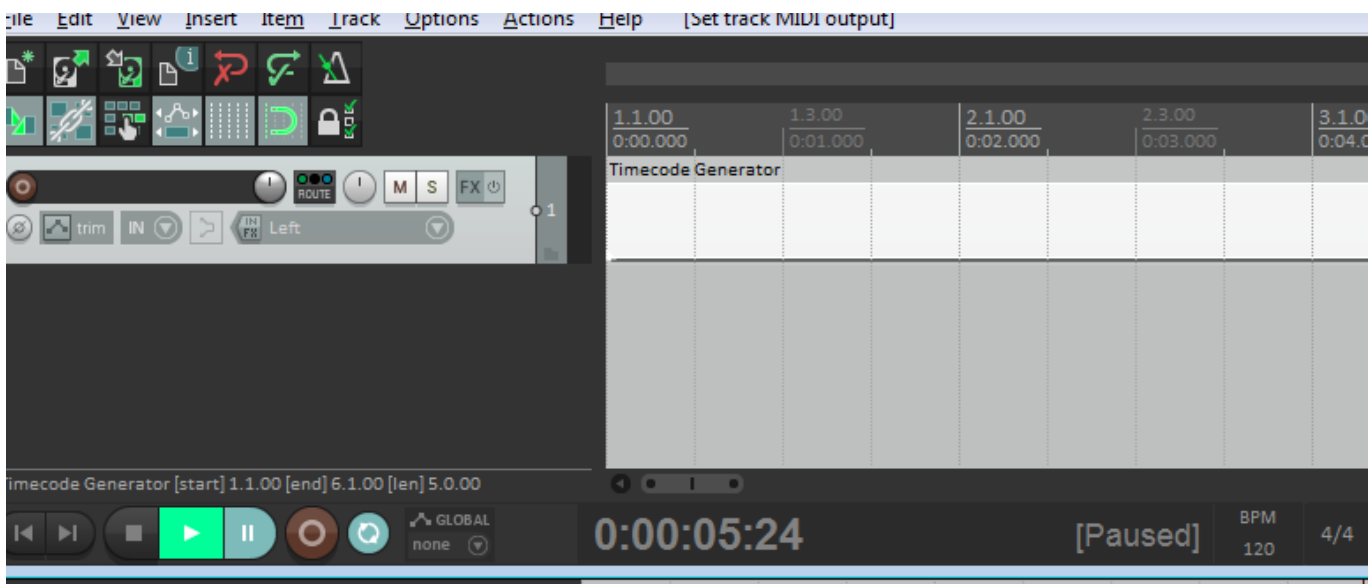


Close the routing window.

4. Try it out

Essentially this should work straight away: as soon as you hit Play in Reaper, the timecode value in Titan starts to run. It is advisable to change the time units in Reaper: right-click on the timeline or the displayed time, and from the context menu select Hours:Minutes:Seconds:Frames.

This also works together with Reaper being controlled by Titan via MMC, like described in [Controlling Reaper from Titan on the same PC](#)



I noticed a gap between the timestamps in Reaper and in Titan. This seems to be due to both, Reaper, as well as Titan/USB Expert, and needs to be investigated further.

From: <https://avosupport.de/wiki/> - AVOSUPPORT

Permanent link: https://avosupport.de/wiki/external/examples/reaper_timecode_on_same_pc?rev=1581603366

Last update: 2020/02/13 14:16

