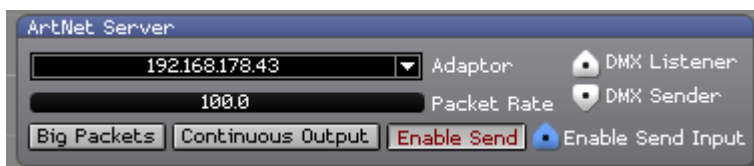


Ai Modules

ArtNet Server

section	Network
short description	provides connectivity for Artnet inputs and outputs of all sorts
licence level	Anjuna
ports	DMX Sender [multipurpose] - patch this e.g. to an ArtNet Input Large module in order to make it receive Artnet
	DMX Listener [multipurpose]
	Enable Send Input [control/numeric]
	Input 0~23 [control/numeric] - the data to be send on the respective channel
	Output 0~23 [control/numeric] - the data to received for the respective channel
parameter	Channel Assign 0~23 [text/numeric]
	Universe [text/numeric] - the Artnet universe
	Adaptor [dropdown select] - select the network card to be used for Artnet
	Continuous Output [togglebutton]
	Big Packets [togglebutton]
	Enable Send [togglebutton]
skins	Packet Rate [text/numeric]
	Default , compact

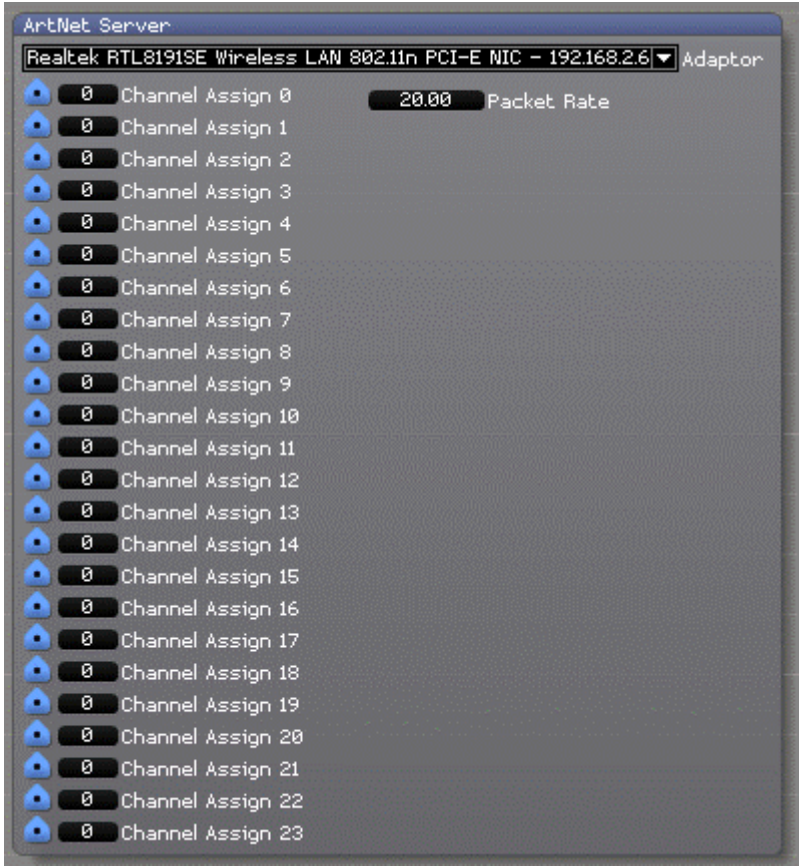


used in example

- [Visualiser: Moving Matrix](#)

Manual

Converts incoming control data into Artnet data and sends it to the selected channel, universe and Artnet adaptor.



From:
<https://avosupport.de/wiki/> - **AVOSUPPORT**

Permanent link:
https://avosupport.de/wiki/ai/modules/network/artnet_server?rev=1540140813

Last update: **2018/10/21 16:53**

